

FIRST & WASHINGTON  
**LEVEL G4 PLAN**  
 SCALE: 1/16" = 1'-0"

**PLAN SYMBOLS**

- XX WORK ITEM NUMBER, REFER TO LIST BELOW
- 0 SF QUANTITY UNIT
- 0 SF QUANTITY OF REPAIR
- EXISTING EPOXY BROADCAST SYSTEM
- NEW TRAFFIC COATING (EPOXY/URETHANE)

**RESTORATION WORK ITEMS**

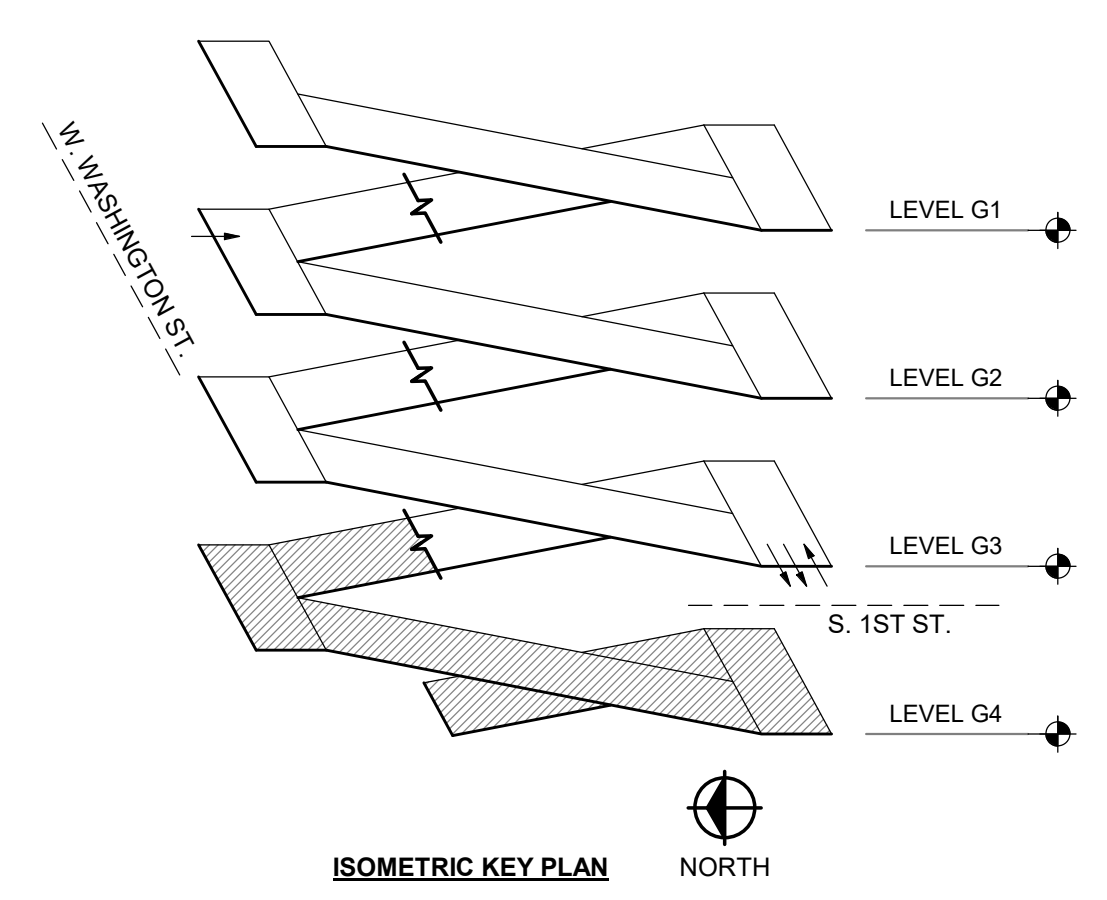
- 3.1 SLAB EDGE REPAIR, REFER TO DETAIL 1/SR506 - ALTERNATE #2
- 3.2 COLUMN REPAIR, REFER TO DETAIL 1/SR506 - ALTERNATE #2
- 7.1 REMOVE & REPLACE COVE JOINT SEALANT, REFER TO DETAIL 1/SR506 - ALTERNATE #2
- 7.2 TRAFFIC COATING REPAIR (EPOXY/URETHANE FULL SYSTEM), REFER TO DETAIL 1/SR506 - ALTERNATE #2

**PLAN NOTES**

- 1. ALL SLABS AND STAIR TOWER TREADS/LANDINGS HAVE AN EXISTING TRAFFIC COATING (EPOXY/URETHANE), EXCEPT WHERE EXISTING EPOXY BROADCAST SYSTEM IS INDICATED ON THE DRAWINGS.

**KEY NOTES**

- 1. REFER TO DETAIL 1/SR506 TO LOCATE REPAIRS AS INDICATED. SLAB EDGE REPAIRS ARE AT EDGE OF RAMP ABOVE. ALL OTHER REPAIRS ARE AT INTERSECTION OF FLOOR SLAB AND COLUMN.



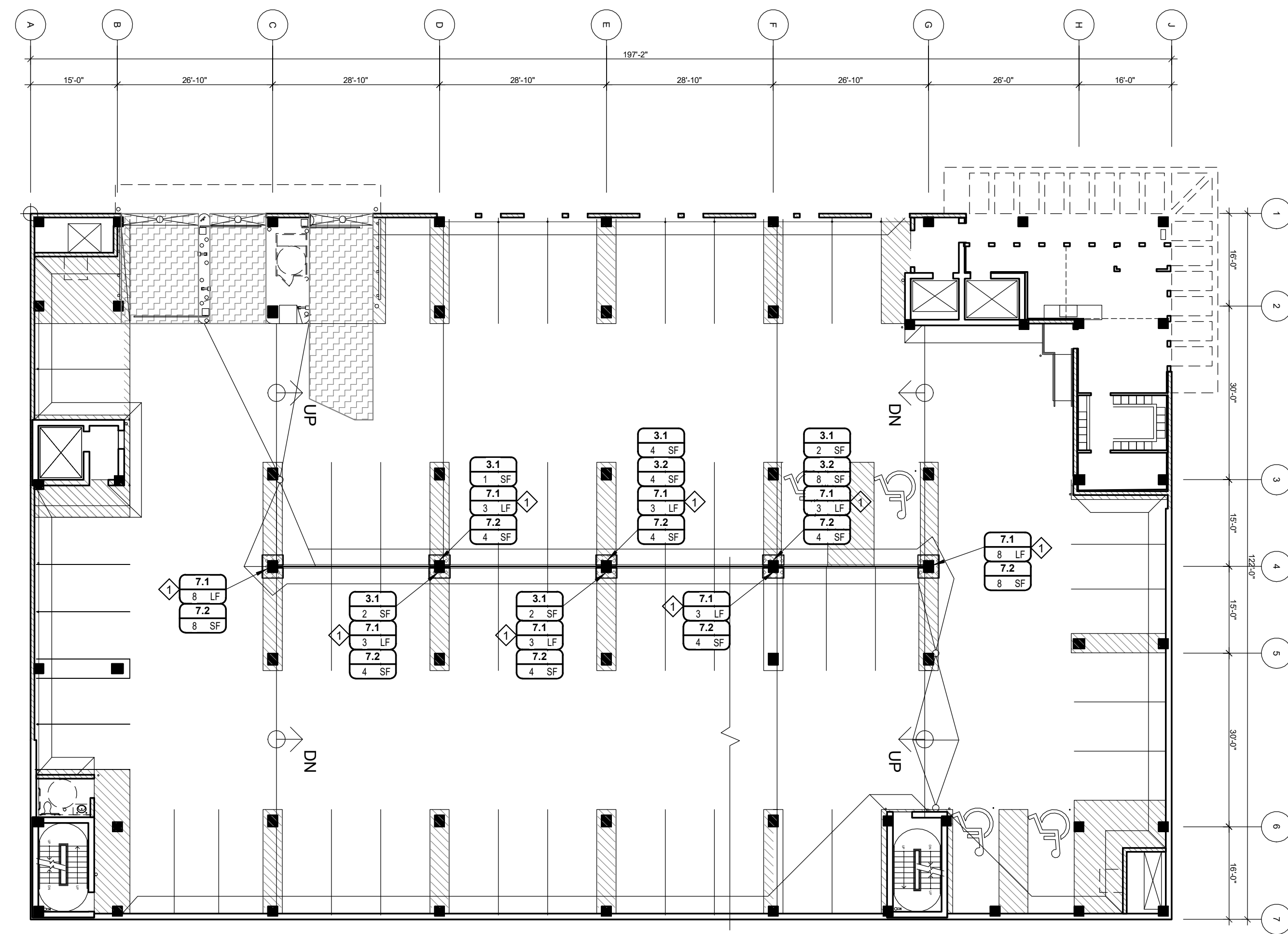
REVISIONS		
5/8/2026	A1	ADDENDUM NO. 1

04/27/2026	BIDDING & CONSTRUCTION
Drawn By	DBROWN
Designer	TJUST
Reviewer	JTHOMSON
Manager	JTHOMSON

Hard copy is intended to be 24"x36" when plotted. Scale(s) indicated and graphic quality may not be accurate for any other size.

PROJECT NO.  
**2117440.09**

SHEET NO.  
**A1**  
SR131



FIRST & WASHINGTON  
**LEVEL G3 PLAN**  
 SCALE: 1/16" = 1'-0"  
 NORTH

**PLAN SYMBOLS**

- XX WORK ITEM NUMBER, REFER TO LIST BELOW
- 0 SF QUANTITY UNIT
- 0 SF QUANTITY OF REPAIR
- EXISTING EPOXY BROADCAST SYSTEM
- NEW TRAFFIC COATING (EPOXY/URETHANE)

**RESTORATION WORK ITEMS**

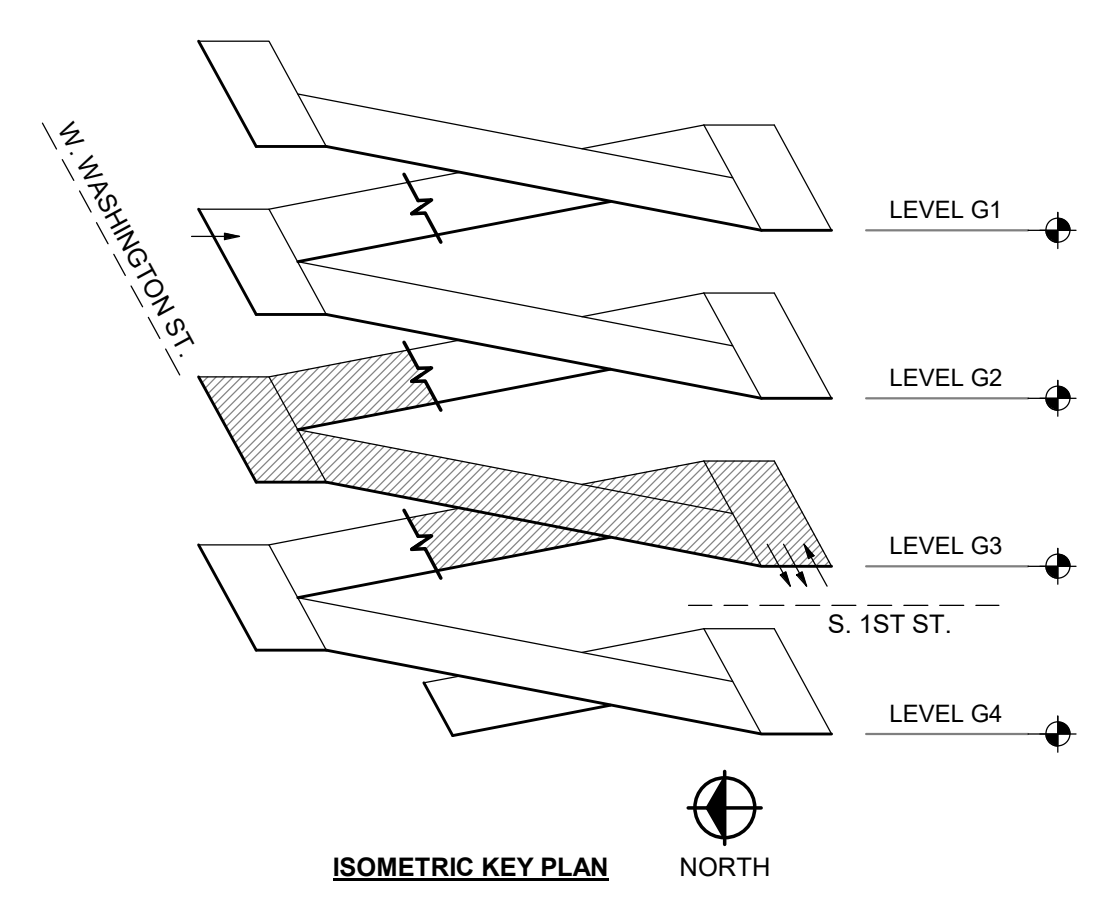
- 3.1 SLAB EDGE REPAIR, REFER TO DETAIL 1/SR506 - ALTERNATE #2
- 3.2 COLUMN REPAIR, REFER TO DETAIL 1/SR506 - ALTERNATE #2
- 7.1 REMOVE & REPLACE COVE JOINT SEALANT, REFER TO DETAIL 1/SR506 - ALTERNATE #2
- 7.2 TRAFFIC COATING REPAIR (EPOXY/URETHANE FULL SYSTEM), REFER TO DETAIL 1/SR506 - ALTERNATE #2

**PLAN NOTES**

- 1 ALL SLABS AND STAIR TOWER TREADS/LANDINGS HAVE AN EXISTING TRAFFIC COATING (EPOXY/URETHANE), EXCEPT WHERE EXISTING EPOXY BROADCAST SYSTEM IS INDICATED ON THE DRAWINGS.

**KEY NOTES**

- 1 REFER TO DETAIL 1/SR506 TO LOCATE REPAIRS AS INDICATED. SLAB EDGE REPAIRS ARE AT EDGE OF RAMP ABOVE. ALL OTHER REPAIRS ARE AT INTERSECTION OF FLOOR SLAB AND COLUMN.



REVISIONS		
5/8/2026	A1	ADDENDUM NO. 1

04/27/2026 BIDDING & CONSTRUCTION

Drawn By DBROWN  
 Designer TJUST  
 Reviewer JTHOMSON  
 Manager JTHOMSON

Hard copy is intended to be 24"x36" when plotted. Scale(s) indicated and graphic quality may not be accurate for any other size.

PROJECT NO.  
**2117440.09**

SHEET NO.  
**A1**

SR132

REVISIONS		
5/6/2026	A1	ADDENDUM NO. 1

04/27/2026 BIDDING & CONSTRUCTION

Drawn By DBROWN  
 Designer TJUST  
 Reviewer JTHOMSON  
 Manager JTHOMSON

Hard copy is intended to be 24"x36" when plotted. Scale(s) indicated and graphic quality may not be accurate for any other size.

PROJECT NO.  
**2117440.09**

SHEET NO.  
**A1**

**SR133**

**PLAN SYMBOLS**

- XX WORK ITEM NUMBER, REFER TO LIST BELOW
- 0 SF QUANTITY UNIT
- 0 SF QUANTITY OF REPAIR
- EXISTING EPOXY BROADCAST SYSTEM
- NEW TRAFFIC COATING (EPOXY/URETHANE)

**RESTORATION WORK ITEMS**

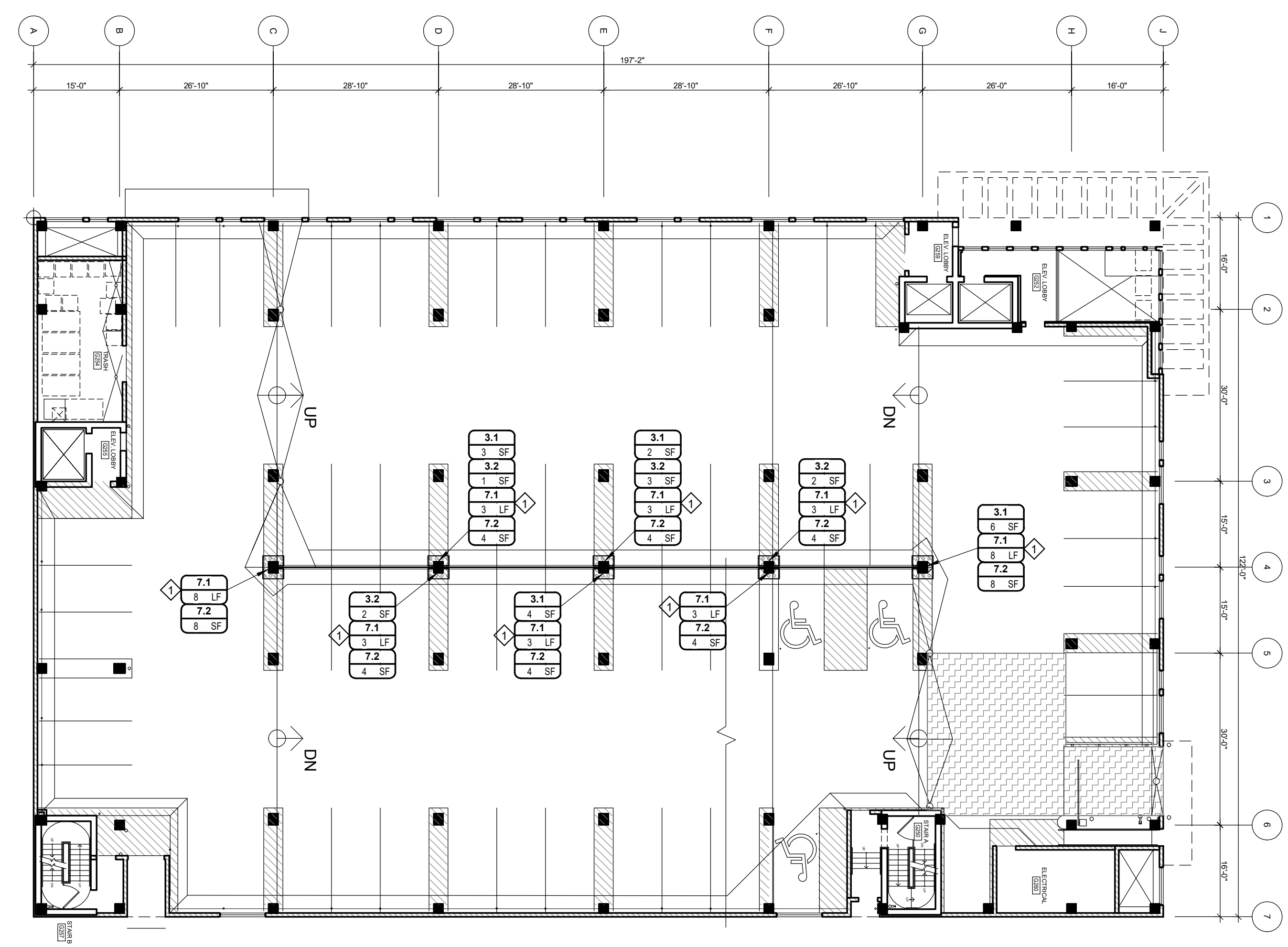
- 3.1 SLAB EDGE REPAIR, REFER TO DETAIL 1/SR506 - ALTERNATE #2
- 3.2 COLUMN REPAIR, REFER TO DETAIL 1/SR506 - ALTERNATE #2
- 7.1 REMOVE & REPLACE COVE JOINT SEALANT, REFER TO DETAIL 1/SR506 - ALTERNATE #2
- 7.2 TRAFFIC COATING REPAIR (EPOXY/URETHANE FULL SYSTEM), REFER TO DETAIL 1/SR506 - ALTERNATE #2

**PLAN NOTES**

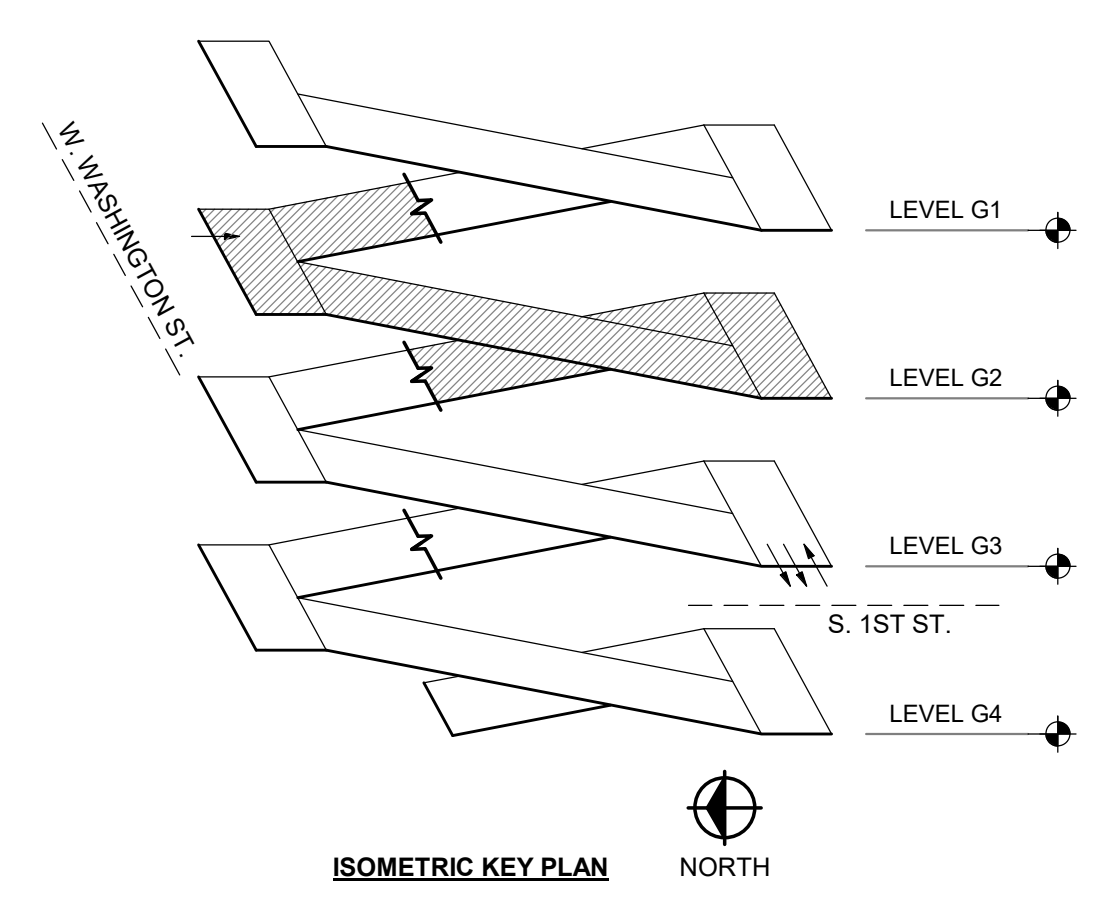
- 1 ALL SLABS AND STAIR TOWER TREADS/LANDINGS HAVE AN EXISTING TRAFFIC COATING (EPOXY/URETHANE), EXCEPT WHERE EXISTING EPOXY BROADCAST SYSTEM IS INDICATED ON THE DRAWINGS.

**KEY NOTES**

- 1 REFER TO DETAIL 1/SR506 TO LOCATE REPAIRS AS INDICATED. SLAB EDGE REPAIRS ARE AT EDGE OF RAMP ABOVE. ALL OTHER REPAIRS ARE AT INTERSECTION OF FLOOR SLAB AND COLUMN.



**FIRST & WASHINGTON  
 LEVEL G2 PLAN**  
 SCALE: 1/16" = 1'-0"  
 NORTH



REVISIONS		
5/6/2026	A1	ADDENDUM NO. 1

04/27/2026 BIDDING & CONSTRUCTION

Drawn By DBROWN  
 Designer TJUST  
 Reviewer JTHOMSON  
 Manager JTHOMSON

Hard copy is intended to be 24"x36" when plotted. Scale(s) indicated and graphic quality may not be accurate for any other size.

PROJECT NO.  
**2117440.09**

SHEET NO.  
**A1**

**SR134**

© Copyright 2026  
 All Rights Reserved

**PLAN SYMBOLS**

- XX WORK ITEM NUMBER, REFER TO LIST BELOW
- 0 SF QUANTITY UNIT
- 0 SF QUANTITY OF REPAIR
- EXISTING EPOXY BROADCAST SYSTEM
- NEW TRAFFIC COATING (EPOXY/URETHANE)

**RESTORATION WORK ITEMS**

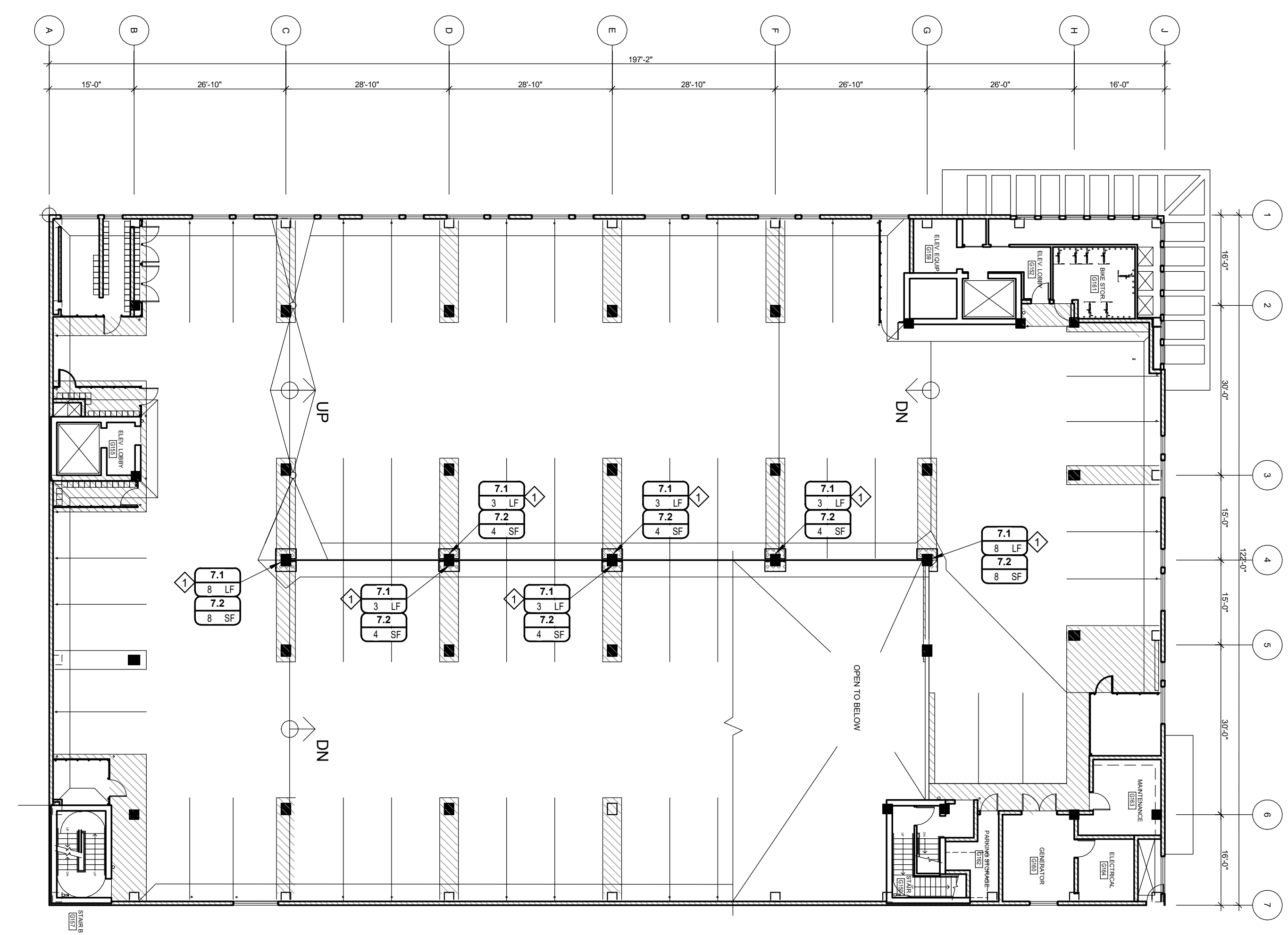
- 3.1 SLAB EDGE REPAIR, REFER TO DETAIL 1/SR506 - ALTERNATE #2
- 3.2 COLUMN REPAIR, REFER TO DETAIL 1/SR506 - ALTERNATE #2
- 7.1 REMOVE & REPLACE COVE JOINT SEALANT, REFER TO DETAIL 1/SR506 - ALTERNATE #2
- 7.2 TRAFFIC COATING REPAIR (EPOXY/URETHANE FULL SYSTEM), REFER TO DETAIL 1/SR506 - ALTERNATE #2

**PLAN NOTES**

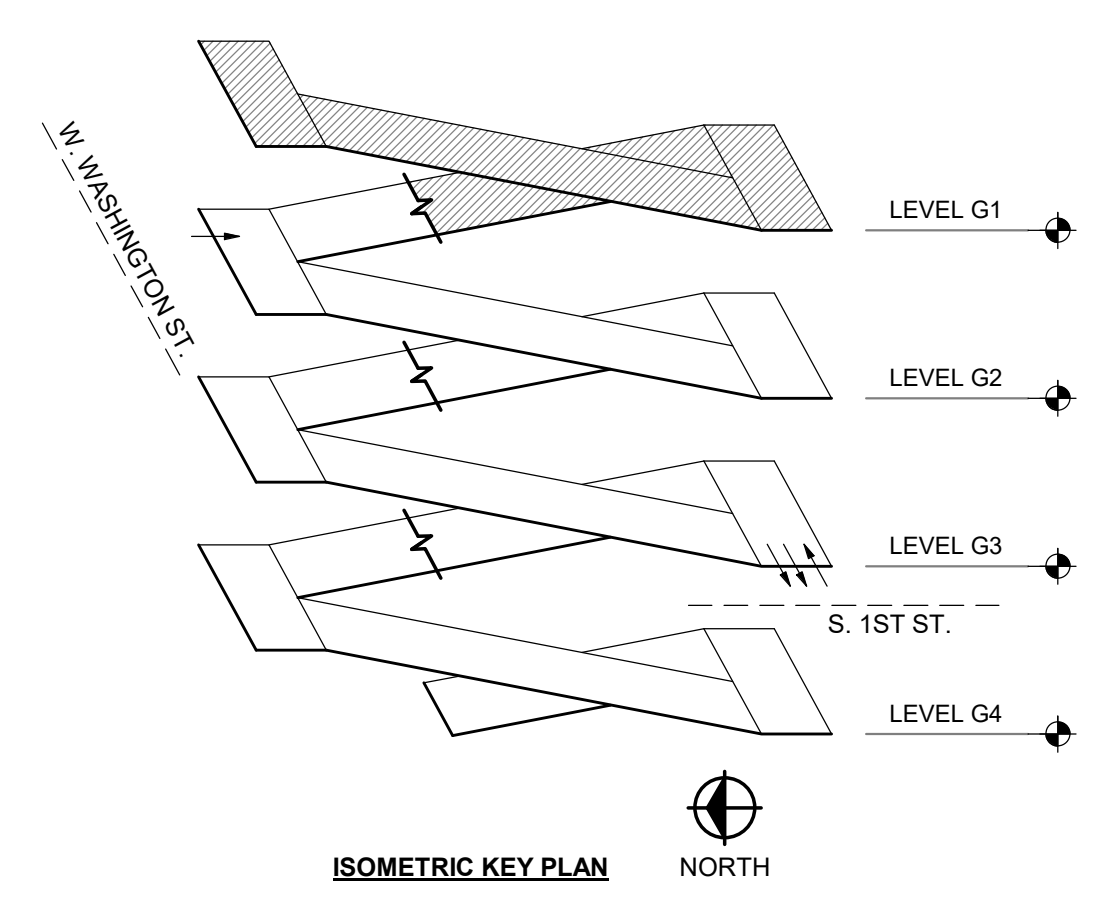
- 1. ALL SLABS AND STAIR TOWER TREADS/LANDINGS HAVE AN EXISTING TRAFFIC COATING (EPOXY/URETHANE), EXCEPT WHERE EXISTING EPOXY BROADCAST SYSTEM IS INDICATED ON THE DRAWINGS.

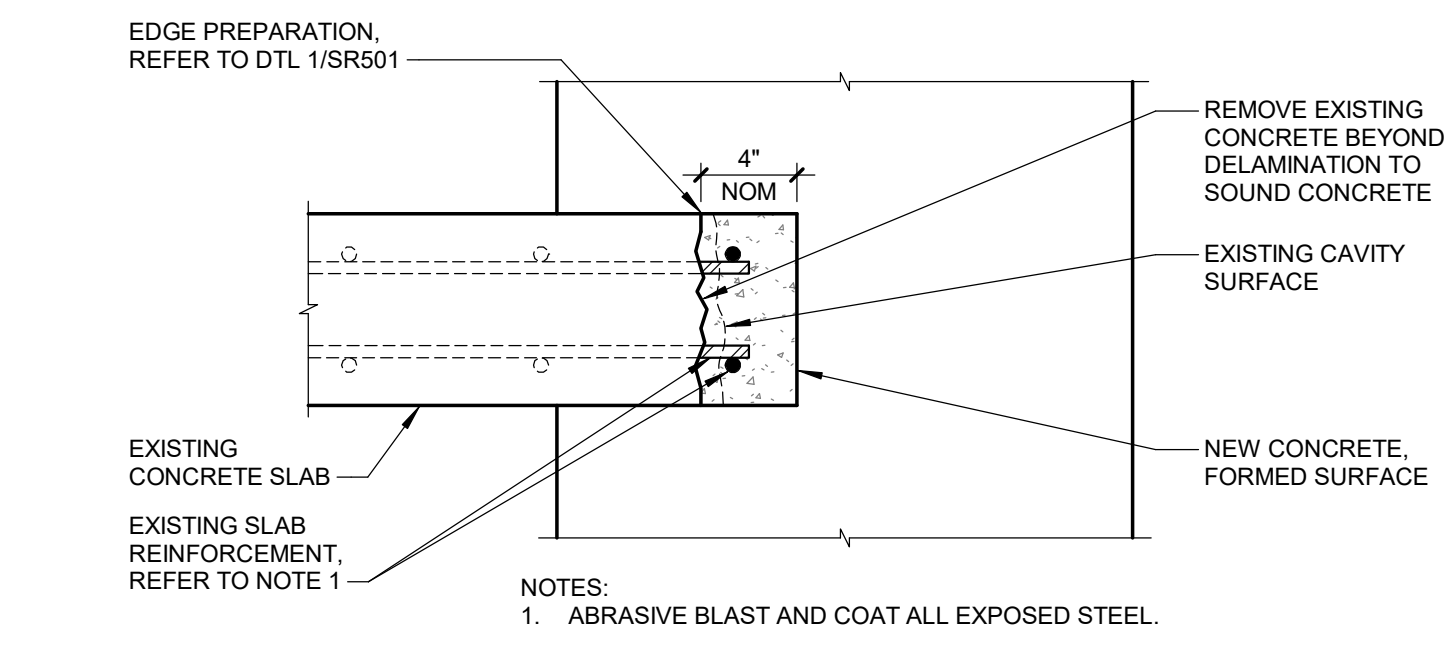
**KEY NOTES**

- 1. REFER TO DETAIL 1/SR506 TO LOCATE REPAIRS AS INDICATED. SLAB EDGE REPAIRS ARE AT EDGE OF RAMP ABOVE. ALL OTHER REPAIRS ARE AT INTERSECTION OF FLOOR SLAB AND COLUMN.

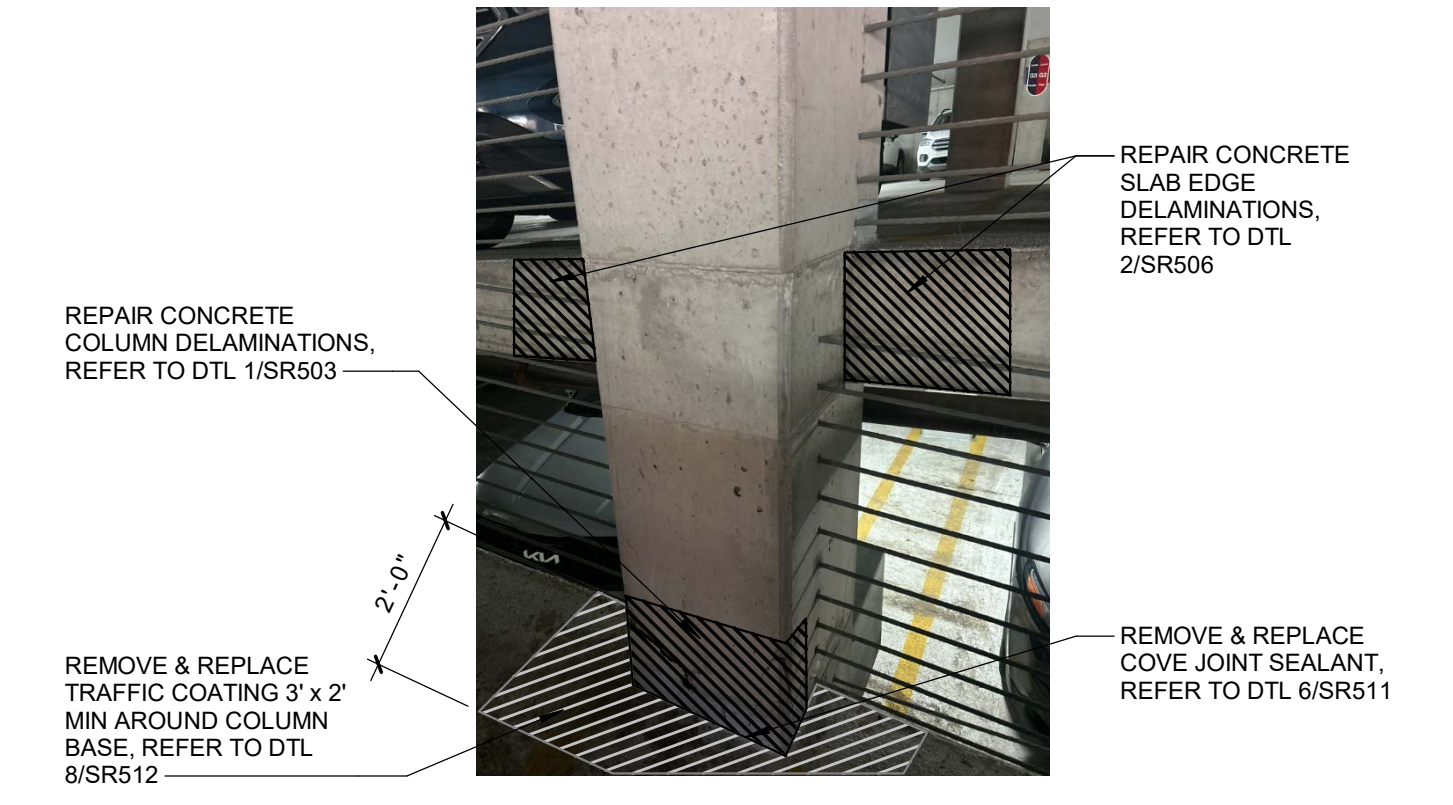


FIRST & WASHINGTON  
**LEVEL G1 PLAN**  
 SCALE: 1/16" = 1'-0"  
 NORTH





FIRST & WASHINGTON (ALTERNATE #2)  
**2 SLAB EDGE REPAIR DETAIL**  
 SCALE: 1 1/2" = 1'-0"



FIRST & WASHINGTON (ALTERNATE #2)  
**1 COLUMN/SLAB REPAIR DETAIL**  
 SCALE: 12" = 1'-0"

REVISIONS		
5/6/2026	A1	ADDENDUM NO. 1

04/27/2026 BIDDING & CONSTRUCTION

Drawn By DBROWN  
 Designer TJUST  
 Reviewer JTHOMSON  
 Manager JTHOMSON

Hard copy is intended to be 24"x36" when plotted. Scale(s) indicated and graphic quality may not be accurate for any other size.

PROJECT NO.  
**2117440.09**

SHEET NO.

**SR506**

© Copyright 2026  
 All Rights Reserved

**Ann Arbor DDA**  
 Ann Arbor, Michigan  
 Parking Structures Restoration 2026

